

STA-RITE®



LT Series™ Thermoplastic Centrifugal Pumps



Versatile, corrosion-resistant, high performance centrifugal pumps for a variety of flooded suction applications.

LT Series thermoplastic straight centrifugal pumps are ideal for many different flooded suction installations including spa/hot tub circulation, jetted bathtubs, solar heating, above ground pool circulation, and fluid transfer applications. These pumps feature a non-clogging semi-open impeller and seal plate constructed of compression-molded phenolic, plus a pump body of Dura-Glas® composite resin to ensure maximum service life.

Standard Features

- Molded thermoplastic, straight centrifugal pump offers excellent corrosion resistance.
- Non-clogging, semi-open impeller.
- Discharge port may be repositioned to four different positions to facilitate piping connections.
- Designed primarily for horizontal installation but may be mounted vertically when necessary with the suction port downward.
- Drip-proof mechanical shaft seal is precision-polished ceramic with carbon stationary element.
- Available in UL listed models of $\frac{1}{8}$, $\frac{1}{4}$, or $\frac{3}{4}$ HP sizes.

LT Series™

Thermoplastic Centrifugal Pumps

MATERIALS AND DESIGN

Pump Body

- Volute**

Dura-Glas® glass-filled thermoplastic. Impeller and seal plate are compression-molded phenolic.

- Impeller Type**

Semi-open with brass threaded hub. Clearance adjustable with shims.

- Port Sizes**

Suction and discharge are 1 1/4" NPT. 1 1/2" slip x 1 1/4" NPT unions included (PVC).

- Shaft Seal**

Ceramic, mechanical type with brass bellows and tension spring.

Motor

- Type**

48 frame, split-phase, continuous duty rated, 3450 RPM, open drip-proof design.

- Bearings**

Sealed ball bearings

- Motor Shaft**

Threaded, 416 grade stainless steel.

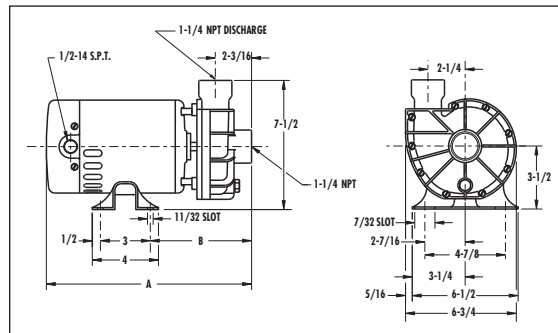
Electrical

- Requirement**

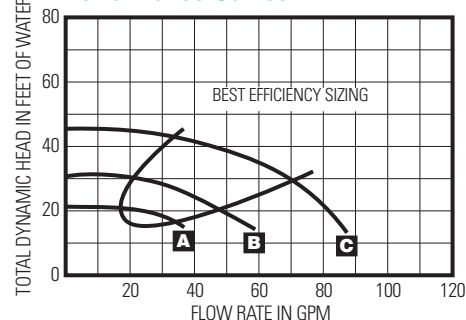
115V, 60 Hz single phase.

- Maximum Limits**

Voltage range: 104 to 126 volts
 Liquid Temperature: 140°F (60°C)
 Ambient Air Temperature: 122°F (50°C)
 Pressure: 25 PSI at 140°F



Performance Curves



Outline Dimensions

| Catalog Number | HP | DIMENSION | |
|----------------|-----|-----------|-------|
| | | A | B |
| LT1/6L | 1/6 | 13 1/8 | 6 3/4 |
| LTACL | 1/2 | 13 1/8 | 6 3/4 |
| LTADL | 3/4 | 14 1/8 | 6 3/4 |

All dimensions shown in inches.

Ordering Information

| Catalog Number | Nominal HP | Maximum BHP | Motor Voltage | Maximum Load Amps | Approx. Ship. Weight (lbs.) |
|------------------------|------------|-------------|---------------|-------------------|-----------------------------|
| 3450 RPM MODELS | | | | | |
| LT1/6L | 1/6 | .22 | 115 | 4.5 | 18 |
| LTACL | 1/2 | .60 | 115 | 8.4 | 18 |
| LTADL | 3/4 | .80 | 115 | 11.4 | 20 |

Accessory Ordering Information

| Catalog Number | Description | Approx. Ship. Weight (lbs.) |
|----------------|---------------------------|-----------------------------|
| PKG 142 | 4" Strainer (1 1/2" Slip) | 2 |



Certifications

All LT Series pumps are UL Listed, UL Standard 1081.



Phone: 800-831-7133

Fax: 800-284-4151

www.pentairpool.com

www.starite.com