

Wallace & Tiernan® Data Management ChemWeb-Server

Nowadays innovative electronic development not only deals with the functions of measurement and control, but beyond that to data management and remote access. The general availability of the Internet as a worldwide standard for data communication plays an important role. By using Web technology the Internet potential of this worldwide standard can be utilised for process control. With this infrastructure, access to the ChemWeb-Server is possible from any computer with Internet access. No proprietary software is required.

General

The main benefits of the Wallace & Tiernan® ChemWeb-Server are found in the area of process data monitoring, routine checks, service and maintenance. Any time and anywhere in the world, the system allows communication with Wallace & Tiernan® equipment. When you need it, you just connect the unit installed via the RS 485 bus to the ChemWeb-Server.

The ChemWeb-Server is equipped with all the standard interfaces required for Internet communication. Access via PC and standard Internet Browser is therefore always guaranteed (Refer to diagrams on page 2).

The client-server-structure provides simultaneous multiple user access, even via different communication systems. Access is also possible at the same time for different actions: system operation, maintenance, establishment of works schedules, management. Easy and cost-effective access is possible worldwide via a local Internet service provider. Password protected access provides system security.

Features

The Wallace & Tiernan® ChemWeb-Server can be programmed for the functions described below. Data logs can be displayed in a trend curve that evaluates the current history of process parameters.

- Online display of measured values, parameters and trend curves on internet pages

Benefits:

- Easy connection of Wallace & Tiernan® equipment to Web technology
 - Communications via RS 232 interface, Ethernet and embedded modem
 - Access password protected
 - Can be accessed simultaneously by multiple users
 - Allows worldwide connection via a local internet service provider
 - Requires only a standard web browser for monitoring measured values and status reports
 - Installation by "Plug & Play"
 - Requires only a standard web browser
-
- Configuration of monitors and controllers via system set-up screens in your web browser
 - Remote access (FTP) to data logs (ASCII format)
 - Data logging on removable CompactFlash® memory card (can be directly read on your PC via a memory card reader)
 - Automatic notification via email (SMTP), report function (timer-controlled) or message function (event-controlled)

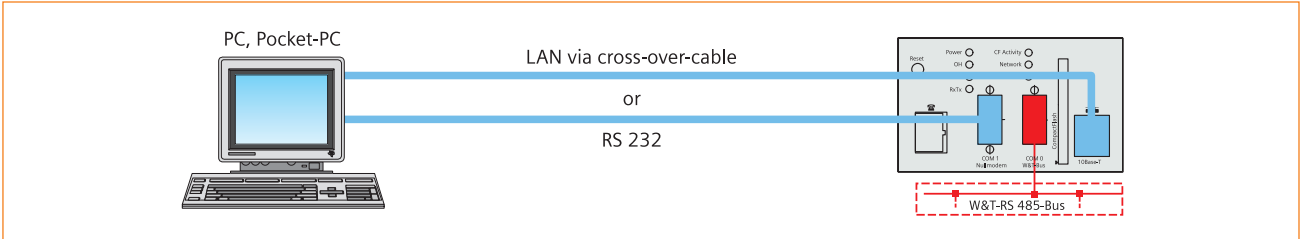


Product Sheet

Communications overview

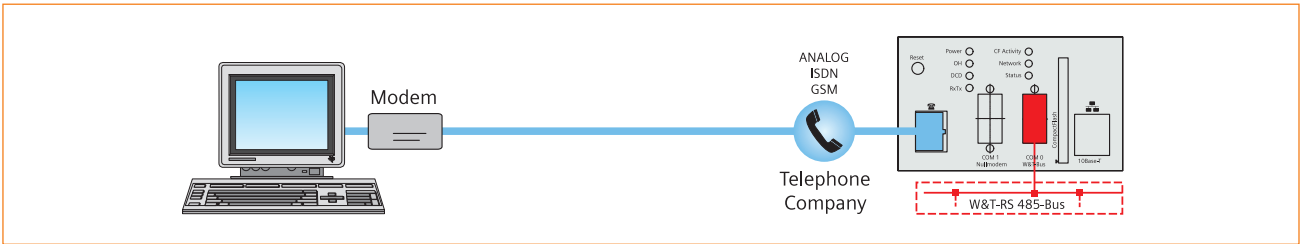
Independent of the type of connection users can access all functions and data via the Chem-Web-Server. The following configurations are possible:

Direct connection to a PC via LAN or RS 232



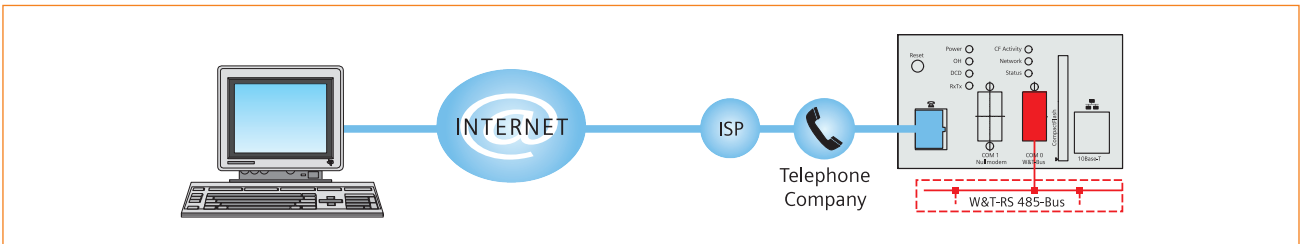
On-site connection between PC or Pocket PC and the ChemWeb-Server can be established via a serial RS 232 standard cable or cross-over-network cable.

Modem to modem-connection – direct connection of the ChemWeb-Server



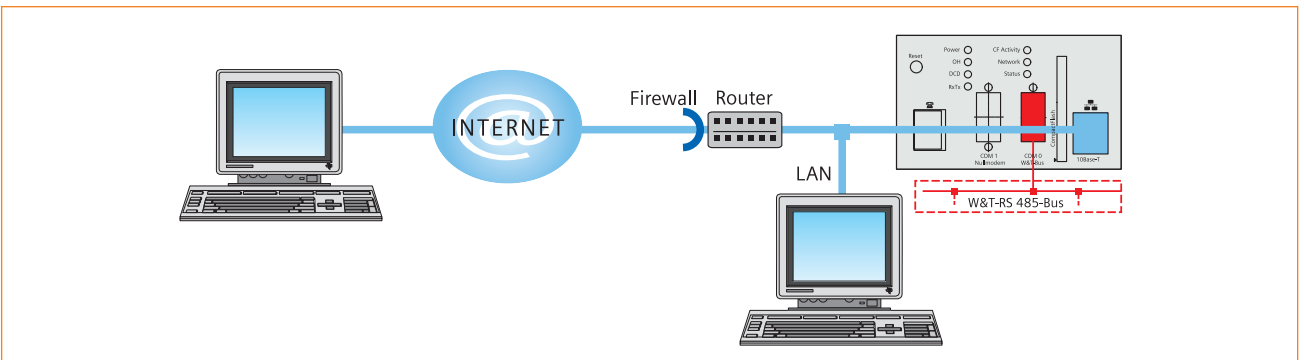
In the case of a long distance between client and ChemWeb-Server a telephone connection via the public network can be established. All types, analog, ISDN, or GSM modems can be used.

Internet connection after automatic tapping of the ChemWeb-Server



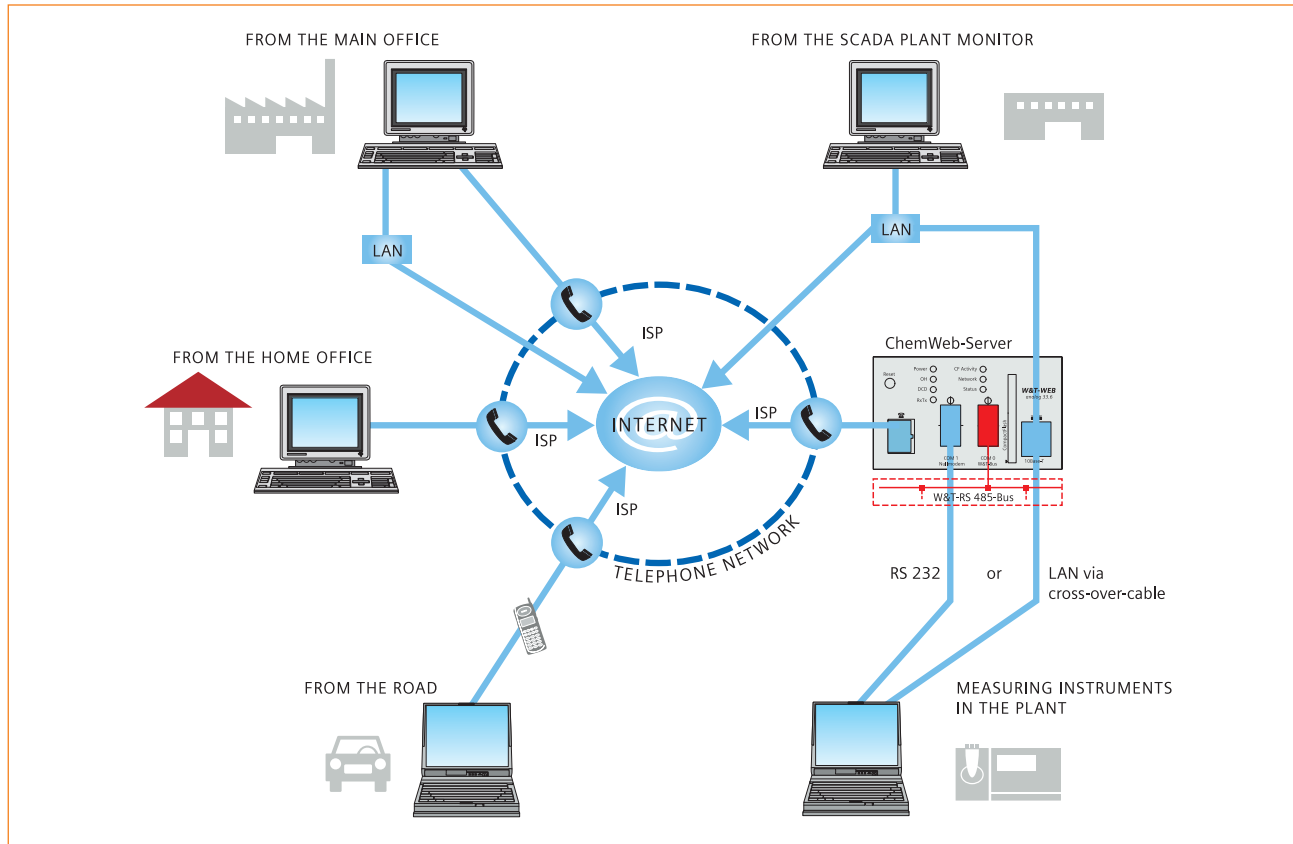
For an automatic e-mail notification or a direct access only, a local phone call to a local internet service provider is required. Long distances can be covered without the expense of a long distance phone call.

Access via internet (local area network/LAN) and internet via router



An Ethernet connection provides both quick connections in the local area network and connection to the internet via router.

Multiple connection utilities



Use of the internet infrastructure provides any PC with internet access with a connection to the ChemWeb-Server at any time. Process parameters can be accessed from the home office, from the road, in the plant monitoring center or directly at the measuring instruments in the plant: without proprietary software.

Use your PC at home to obtain information on the status of your monitoring and control equipment. No software licences are required.

Utilise the available structure of the intranet (local area network) and provide access to the process data from any computer. Just connect the ChemWeb-Server via the integral Ethernet port to your network. In addition, it can be accessed at the same time via its embedded modem.

Make a direct call to the server via the telephone network and access the internet pages of the instruments connected. Download the data logs in ASCII format onto your computer and evaluate these files with table calculation programmes.

Save telephone costs: After direct dialling via the integral modem the ChemWeb-Server accesses for a fixed period

of time an ISP (Internet Service Provider) on the internet. You receive an e-mail indicating the IP address through which the ChemWeb-Server can be accessed (via internet).

After an event-controlled transmission of notifications or the timer-controlled transmission of reports by e-mail, the ChemWeb-Server remains accessible through the internet for a given period of time. The password protected parameters (setpoints, process times ...) can be remotely modified using forms on the browser screen.

ChemWeb-Server as data logger: Take out the CompactFlash® memory card and transmit the logged data by means of a memory card reader directly to a PC hard disk.

Connect the measuring instruments via 2-wire RS 485, start the Bus-Scan function, and the internet pages and log files will be automatically generated.

There is no time consuming start-up and configuration work required.

Technical requirements

- Standard web browser (i.e. Internet Explorer or equivalent, with Java VM)

Installation

- Connect measuring instruments via 2-wire RS 485 interface
- User-friendly "Plug & Play": Instruments are identified by Bus-Scan and the instrument-specific web pages are automatically generated.

Connections

(Refer to diagrams on page 2)

- Direct serial connection via RS 232 interface or LAN on PC, laptop
- Via embedded modem (analog, ISDN, Global System for Mobile communication GSM)
- Ethernet: LAN 10BaseT
- Internet (WAN): via ISP (Internet Service Provider), phone or router.

Supported Wallace & Tiernan® process units

- with RS 485 interface like DEPOLOX® Pool, MFC, SFC, PCS, PCS *plus*, Strantröl® MG/L5, DEPOLOX® 3 *plus*, Ezetrol®, TMS 561, GMS, GMS *plus*, Chemtrim®, V600, OSEC®-NT, OSEC®-A, UFOX 10, UFOX 20, Barrier® M, Barrier® A
- A total of max. 32 units
- Max. W&T-RS 485 bus cable length is 1200 m / 4000 ft

Interfaces

- 10BaseT Ethernet (RJ45 connection)
- RS 485 interface for access to W&T bus system (can be switched over to RS 232C)
- RS 2342C interface for local access (Null-modem mode)

Integral modem modules

- Analog modem¹⁾ (56 K)
License CTR21 (Europe), USA consult
- ISDN-modem¹⁾
License CTR3, ETS TBR3/A1
- GSM Global mobile communication²⁾
License CTR31, CTR32
- Dual Band modem 900 / 1800 MHz

1) connection screw-type terminal or RJ45 (Western)

2) FME-antenna connector for external antenna

Supported protocols

- HTTP: Hyper – Text – Transmission – Protocol for the transmission of internet pages
- FTP: File – Transfer – Protocol for access to data on Computer or CompactFlash® card
- Telnet: Terminal – Program – Protocol for further server diagnosis
- SMTP: Simple – Mail – Transfer – Protocol for the transmission of e-mails

Storage capacity

- CompactFlash® cards (128, 256 MB available)
- Storage requirement approx. 0.5 MB per monthly file of a bus participant

Power supply

- 10 – 60 V DC
- Power consumption 5 – 10 W depending on model

Physical characteristics

Dimensions (W x D x H):

100 mm x 110 mm x 75 mm / 3.9 x 4.3 x 2.9"

Weight:

Approx. 450 g / 1 lb

Mounting:

DIN – top hat rail NS35/7.5

Enclosure:

Casing IP 40
Terminals IP 20

Ambient temperature:

0 – 55 °C / 32 – 131 °F

Air humidity:

0 – 95 % not condensing

Siemens
Water Technologies

Germany:
+49 8221 9040
wtger.water@siemens.com

United Kingdom:
+44 1732 771777
wtuk.water@siemens.com

USA:
+1 856 507 9000
wtus.water@siemens.com

© 2008 Siemens Water Technologies
WT.040.525.000.IE.PS.0408
Subject to change without prior notice.

Wallace & Tiernan, Barrier, Chemtrim, DEPOLOX, Ezetrol, OSEC and Strantröl are trademarks of Siemens, its subsidiaries or affiliates. CompactFlash is a trademark of Sandisk Corporation. The information provided in this brochure contains merely general descriptions of characteristics of performance which in case of actual use do not always apply as described or which may change as a result of further development of the products. An obligation to provide the respective characteristics shall only exist if expressly agreed in the terms of contract.