

Strantrol® Impact Aquatic Management System

Basic Operations



Main Display Operation

The **Parameter** buttons are labeled pH, HRR, Cl₂ (optional), Temp and Flow (optional), when pressed reveal the setpoint, alarm setpoints, and history of the selected parameter.

The **Feed Mode** buttons are to the right of the measurements and display Feed, Paused, Off, On, Limit, Man On, or Man Off.

The **LSI/RYZ** can be pressed to reveal the Langelier / Ryznar index of the pool and permits ability to change alkalinity, calcium and TDS.

The **Alarms** button can be pressed to reveal current alarms or to reset failsafes.

The **Assigned Relays** button can be pressed to reveal the current configuration of the relays.

The **Back** button (not shown) can be used to return to the previous screen.

The **Question Mark** button (not shown) can be used to retrieve additional information about the current screen.

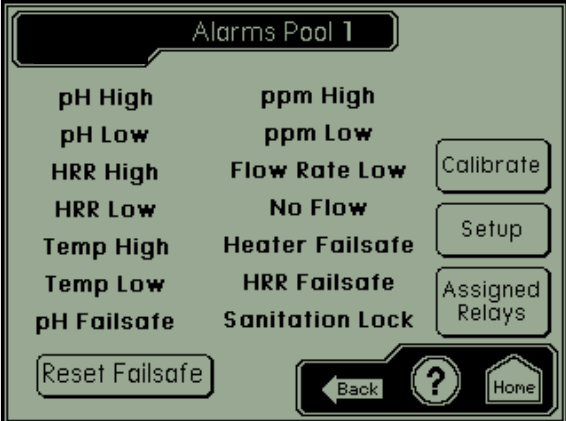
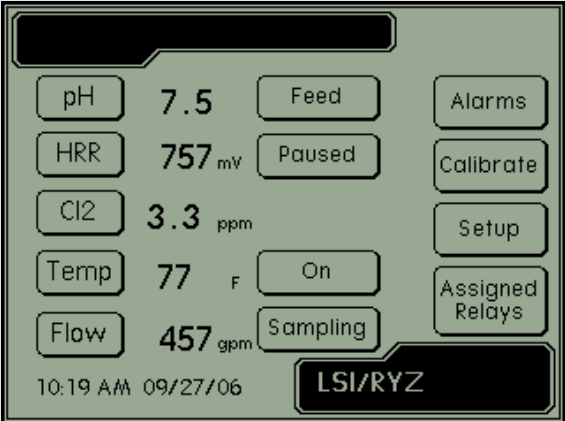
The **Home button** (not shown) exits the menu, logs the user out and returns to the main display.

Reset Failsafe

As a safety feature, the controller is programmed to feed chemicals only for a limited pre-set period. If either the chlorine or pH feed devices exceed this time period, feeding will stop for that channel only and the **Alarms** button will blink. The feed mode status button will display, "Limit".

Press the blinking **Alarms** button.
Press the **Reset Failsafe** button in the lower left corner.

Press **Yes** to reset and resume normal operation.
Press **Home** to exit menu.



Calibration

Single point calibration to a test kit may be required over time.

Press the **Calibrate** button.

Press the button to the parameter that requires calibration.

Press the **Pt1 Value**.

Enter in the number from the test kit.

Press **Save**.

Press **Calibrate Point 1**.

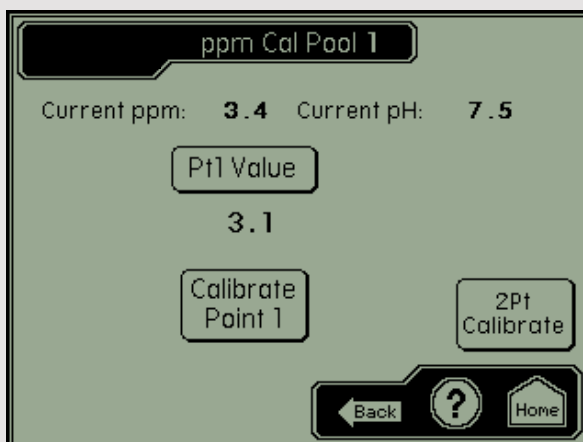
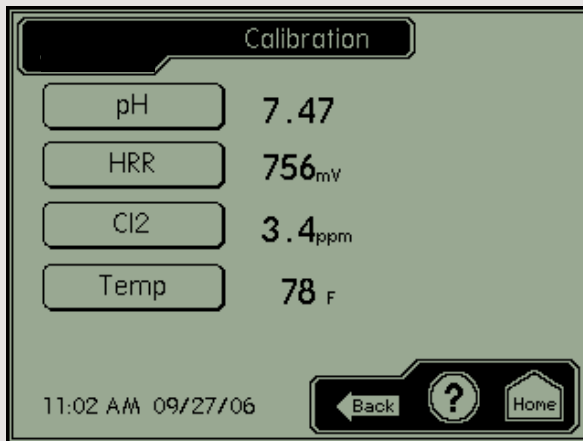
Press **Home** to exit menu.

The Current measurement will change to the Pt1 Value.

Press **Home** to exit menu.

Note: ppm calibrations should only be done when the pH is less than .1 away from setpoint.

Warning: 2Pt Calibrate can only be done by a Distributor of Strantrol® control systems.

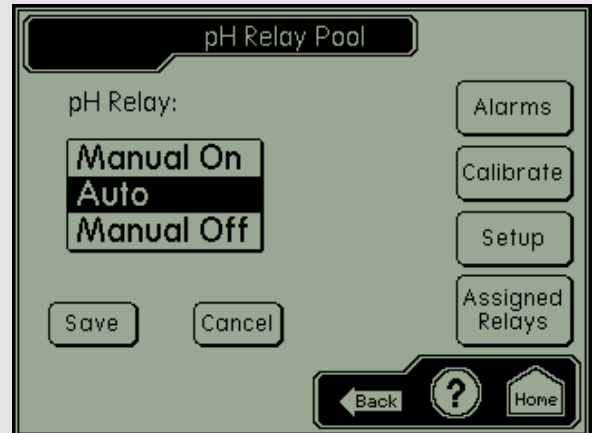


Relay Mode (Manual On, Auto, Manual Off)

Press the **Feed Mode** button to the right of the measurement.

Select the **Manual On, Auto, or Manual Off**.

Press **Save**.



Setpoint

The setpoint may require to be changed due to change in water properties.

Press the button to the parameter that requires setpoint adjustment.

Press the **Control Setpoint** button.

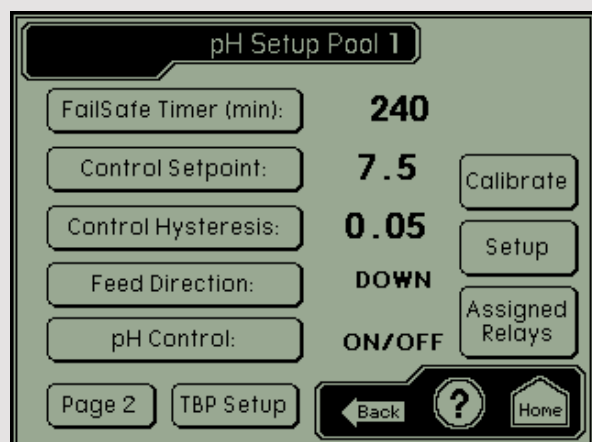
Enter the desired setpoint.

Press **Save**.

Press **Home** to exit menu.

Note: High and Low alarms may require adjustment.

The alarm setpoints can be found by pressing **Page 2** in the bottom left.



Strantrol is a trademark of Siemens, its subsidiaries or affiliates.

The information provided in this brochure contains merely general descriptions or characteristics of performance which in actual case of use do not always apply as described or which may change as a result of further development of the products. An obligation to provide the respective characteristics shall only exist if expressly agreed in the terms of the contract.

Siemens
Water Technologies
595 Industrial Drive
Bradley, IL 60915, USA
800.809.0971 phone
www.usfilter.com
stranco.water@siemens.com

Literature No. ST-Impact-BO-1006
Subject to change without notice.
©2006 Siemens Water Technologies Corp.